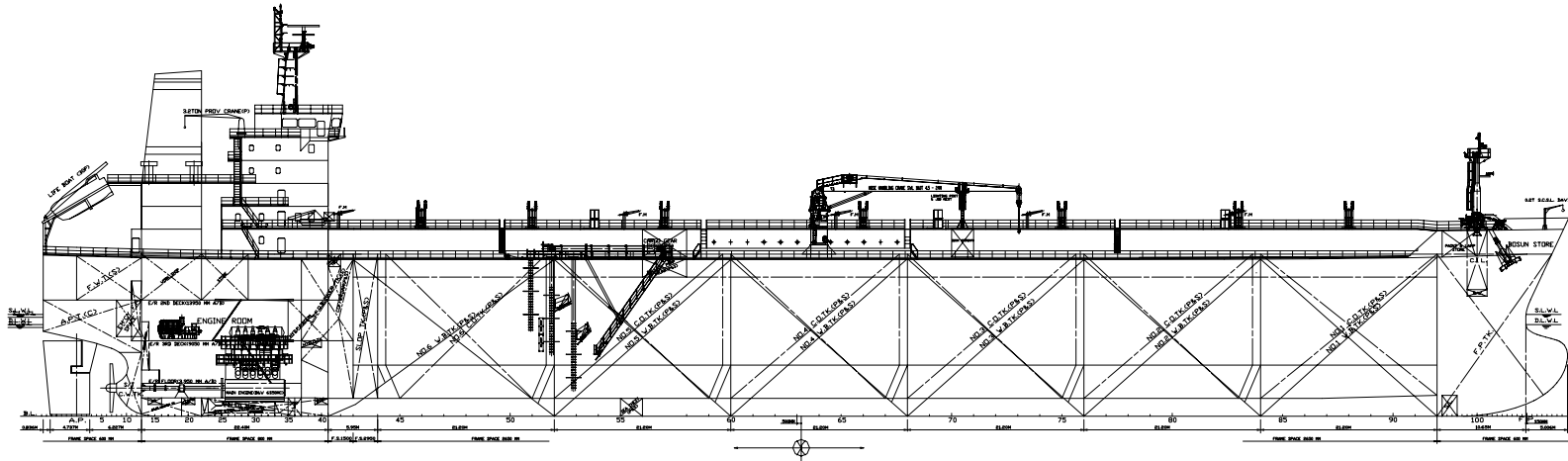


# Veteran Class MT46



## Main Dimensions

Length overall	abt. 183.0 m
Length between perpendiculars	174.0 m
Breadth, moulded	32.2 m
Depth	18.8 m
Design/scantling draught	abt. 11.0/ 12.20 m
Deadweight	abt. 40,700/45,800 t
Gross tonnage	abt 29,200

Tank capacity		
in holds	52,650 m³	
Stop-tank	1,150 m³	
total	53,800 m³	
Ballast water	22,5000 m³	

Tank capacity:	HFO	1,600 m³
	MDO	170 m³
	Fresh water	250 m³
	Potable water	50 m³
	Lube Oil	100 m³

Speed 11.0 m, 85 % MCR, 15% sm,	abt. 14.6 kn
Radius of action ISO cond. 11.0 m 15 kn	14,000 nm

## Class

American Bureau of Shipping  
 A1E, Oil/Chemical Carrier, ESP,  
 Ship Type 3, AMS, ACCU,  
 SH, SHCM, ES, COW, UMLD

Flag of Registry: United States of America

## Equipment for Cargo

Cargo tanks 6 pairs  
 Hyd. submerged pumps 12x600 m³/h 125 m TH  
 Unloading/loading capacity: 3,600 m³/h

## Ship's Equipment

Semi-balanced Spade rudder  
 2 combined anchor/mooring winches,  
 4 mooring winches  
 Lifeboat (freefall) 1 x 30 pers.  
 Stores/Provisions Crane (port) 1 x 3.2 t SWL  
 Cargo Hose Handling Crane 1x10 t SWL

## Machinery

Main engine 2-stroke, 6-cylinder  
 8,700 kW @ 127 RPM

Propeller 1 x solid, 4-blade, 5.80 m dia

Heat generating plant (steam)  
 auxiliary 18 t/h  
 exhaust gas (90% MCR, ISO) 1 x 1 t/h

Diesel generator aggregates 3 x 730 kW @ 720 RPM (electr.)

Integrated automation system  
 Voltages for main consumers 440 V, 220 V, 60 Hz  
 Ballast system: 2 lines 2 x 750 m³/h  
 Foam Water spray system  
 Water fire fighting system  
 CO<sub>2</sub> fire fighting system

## Accommodation

Crew incl. pilot 26 + 6 pers.

Building the Future



part of Aker